



INTRODUCTION

Enjoy your favorite media – whether it be video games, movies, or sports – with dynamic, enhanced visuals and the convenience of portability. GOTheater is a compact, screen-mirroring enabled projector that wirelessly connects via your home WiFi to a variety of mobile devices (smartphones, laptops, tablets, etc.) that delivers a distinctive, home theater experience anywhere you like. Be it indoors or outdoors – all you'll need is the right darkened space, a solid place to project, and the perfect vibes will be set in motion thanks to you and the GOTheater!

* PLEASE READ THIS MANUAL CAREFULLY BEFORE USING AND/OR SETTING UP THE GOTHEATER, AND KEEP IT HANDY FOR FUTURE REFERENCE, AS NEEDED.

FEATURES

- A 150" dynamic image
- Mirror your iPhone/Android smartphone to the projector via WiFi or hard wired connection
- LED lifetime up to 30,000 hours
- Works best for in-home, dark environment video entertainment; not recommended for Word or Excel (i.e. in education or business environments)

WHAT'S IN THE BOX?

- 1x GOTheater projector
- 1x Wireless Remote
- 1x Lens Cover
- 1- AC Power Adapter
- 1x HDMI Cable
- 1x AV/RCA Cable
- 1x User Manual

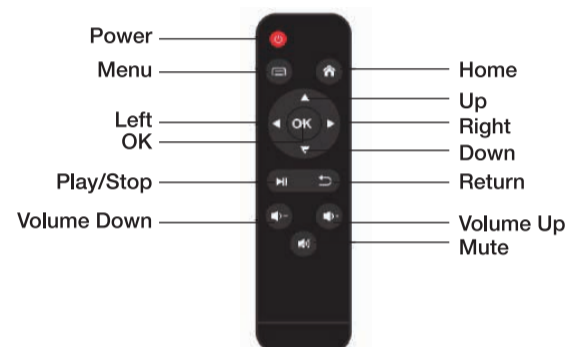
IMPORTANT NOTE: THE GOTHEATER MIRRORING FUNCTION WILL NOT WORK WITH DRM ENABLED PROGRAMS SUCH AS NETFLIX, AMAZON PRIME VIDEO AND OTHER SECURED VIDEO CONTENT DISTRIBUTORS. SOME OF THE SETTINGS AND THE VISUALS ON THE PROJECTOR AND PHONES MAY LOOK DIFFERENT THAN THIS GUIDE DO TO SYSTEM CHANGES AND UPDATES.

LET'S GET STARTED

- Plug the AC power cable into an available outlet. The POWER indicator light on the projector will turn blue after power has been applied.
- Press and hold the POWER button for three seconds on the GOTheater (or on the remote control) to start it up, the projector lamp will light up. The POWER indicator light will flash then will stay a steady blue when the projector is on. The internal fan will also start up, and a boot/static image will display the screen while the GOTheater warms up. It will not respond to any commands while it is warming up.
- To adjust the image/focus, turn the knob just above the lens while observing the on-screen image pixels near the center of the screen. Optimal focus occurs when the on-screen pixels are clearly visible. Depending on how large your (projected) screen is, the focus near the edges of the screen may be less sharp than those at the center of the screen.
- A Keystone image (the Keystone Image Adjustment knob is located just behind the Focus knob) is created when the GOTheater's beam is projected on the screen at an angle. Keystone correction will restore the distorted image to a rectangular or square center.

LET'S TAKE A LOOK AT THE REMOTE

*PLEASE NOTE: The GOTheater's remote is powered by two AAA batteries. Please insert them before use.



LET'S GET STARTED THE BOOT SCREEN

When the GOTheater powers up, the main screen will display as shown below. You can use the arrow button(s) on the remote, or the arrow buttons on the top of the GOTheater itself, to make the appropriate selection:



LET'S GET CONNECTED!

When connecting a signal source to the GOTheater, be sure to:

- Use the correct type of cables for each source
- Be sure the cables are firmly inserted

- In the connection illustrations shown to the right, some cables may not be included with the projector (see WHAT'S IN THE BOX?). They are commercially available online and/or from electronics stores.

FUNCTION	ICON	DESCRIPTION
HDMI		Laptop, DVD Player, etc.
VGA		Connecting to PC
AV		Connecting to AV
Setting		Projector Settings
iOS/Mac		iPhone mirror/Airplay to projector by WiFi
Android Mirror		Miracast for Android Phone by WiFi
USB Mirror		iPhone/Android Phone mirror by USB cable
Media		USB play, Video, Music, Picture

TERMINAL NAME	TERMINAL APPEARANCE	FUNCTION	PICTURE QUALITY
HDMI		Connecting HDMI Devices	● Best
PC (VGA)		Connecting a computer	● Better
USB		Connecting iPhone /Android Phone	● Best

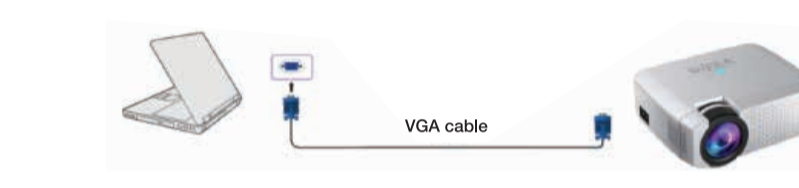
USING HDMI DEVICES

HDMI (High-Definition Multimedia Interface) supports uncompressed video data transmission between compatible devices such as: Laptops, DTV tuners, DVD players, Blu-ray players, Chromecast, Fire TV, etc. HDMI transmits both video and audio signals via a single cable. You should use the included HDMI cable when making a connection between the GOTheater and compatible HDMI devices. The HDMI port is on the right side panel of the GOTheater and is marked "HD."



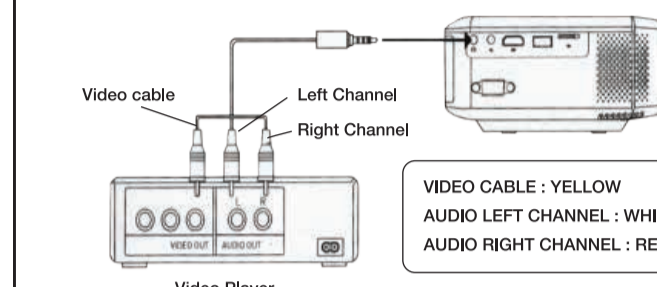
USING A PC (VGA) CONNECTION

Connect the GOTheater to a laptop or desktop computer with a VGA cable (not included). The female VGA connector is on the right side panel of the GOTheater and is blue in color.



USING AN AV/RCA CONNECTION

Follow the diagram below to connect the GOTheater to a device that has RCA (yellow/red/white) inputs. You should use the included AV/RCA cable when making a connection between the GOTheater and compatible AV devices. The female AV/RCA connector is on the right side panel of the GOTheater and is marked "AV."



USING A USB CONNECTION TO PLAY MEDIA

Insert a USB stick with media into the USB socket located on the right side of the GOTheater (it is marked "USB"). When you select the Media icon, you'll see the GOTheater screen as below. Choose the type of media you want to play.

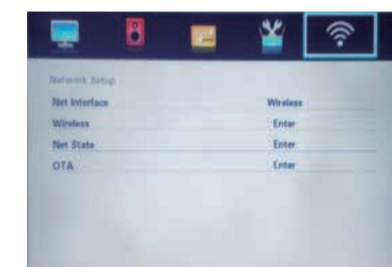


The USB media port supports the following media formats:

File Type	Format
Video	MPEG-1, MPEG-2, MPEG 4, DivX 3/4/5/6, H.264, RM/RMVB, Sorenson Spark, FLV, MOV, MKV, MPG, MP4, WMV
Music	MP1, MP2, MP3, WMA etc Audio formats
Photo	JPEG/BMP/PNG

HOW TO CONNECT THE GOTHEATER TO WIFI

On the main menu click Setting --> Wireless Enter --> WIFI searching. Choose home network and/WiFi name that you wish to connect to then input the network password from the on-screen/soft keyboard. Hit enter on the keyboard to save the password. If the password has been entered properly the GOTheater should then connect to the WiFi network successfully. Once connected, the name of the WiFi network will be displayed on the right-top of the main screen.



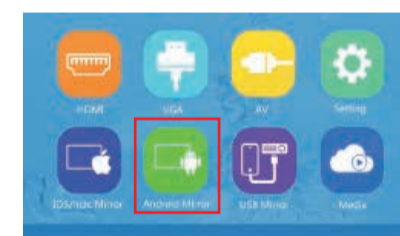
SETTING UP AN iOS/MAC SCREEN MIRROR

Select the iOS/Mac OS icon as seen on the GOTheater screen:

- Open Control Center.
- On an iPhone X or later, swipe down from the top-right corner of your screen. To close, swipe up from the bottom of the screen or tap the screen.
- On an iPhone SE (2nd generation), iPhone 8 or earlier, or iPod touch, swipe up from the bottom edge of any screen. To close, tap the top of the screen or press the Home button.
- Click on Screen Mirroring.
- Choose the GOTheater projector from the devices list and it will automatically connect.
- Your iPhone screen will now show on the projection screen.

SETTING UP AN ANDROID SCREEN MIRROR

Select the Android Mirror icon as seen on the GOTheater screen:

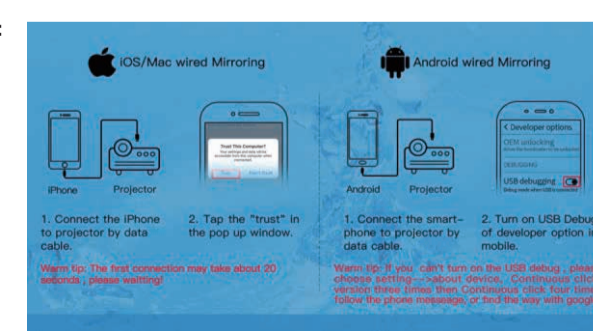


- Open your phone's Wireless Display Mirroring Software (Miracast)
- Choose the GOTheater projector from the devices list and it will automatically connect
- Your phone screen will now show on the projection screen

* PLEASE NOTE: Different brands of Android phones have different names for Miracast. These include: Smart View, Multi-screen, etc. You also can download the app "Miracast Shortcut" from the Google Play store which is a quick launcher for Miracast functionality.

SETTING UP USB SCREEN MIRRORING (for both iOS and Android smartphones)

Select the USB Mirror icon as seen on the GOTheater screen below:



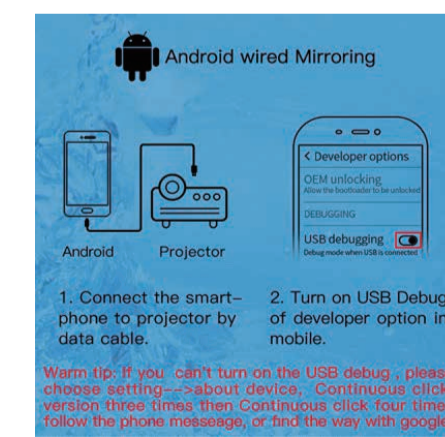
USB MIRROR FOR iOS DEVICES

- Connect your iPhone to GOTheater with the USB cable.
- Tap the "trust" message in the window that pops up.
- After a bit, your iPhone's screen will be mirrored through the GOTheater. The first connection may take approximately 20 seconds.



USB MIRROR FOR ANDROID DEVICES

- Connect the Android to the GOTheater with the USB cable.
- Enable the "USB Debugging" found in the Developer options on your phone. If you don't see the Developer Options, go to Settings > About and click on Build Number several times to enable Developer Options (on some phones it may be under a different name)
- The smartphone screen will then be mirrored to the GOTheater.



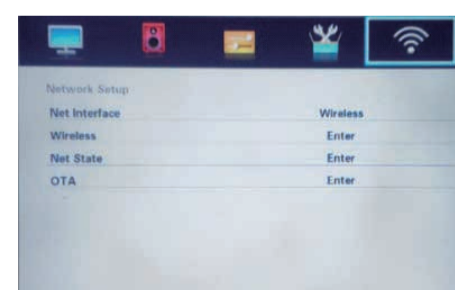
HOW TO ADJUST THE SETTINGS

- Hit the Menu icon on the top of the GOTheater or on the remote control. This will bring up the Settings window (see below) with adjustable sliders for Picture, Sound, Preference, Setup, Network Setup, etc.
- Move the sliders left or right (again with the keys on the top of the GOTheater or on the remote) until you've found your desired setting then hit OK to lock in that setting.



NETWORK SETTINGS

- Net Interface: Will be "Wireless" as there is no hardwired internet connection available on the GOTheater
- Wireless: This will display the name WiFi Network the GoTheater is currently connected to
- Net State: This will display the IP and other network information
- OTA: You can choose to update the GOTheater automatically online; the system will search for any new firmware upgrades and will apply them, as needed.



SPECIFICATIONS

Display Native Resolution: 800 x 480
 HDMI Supported Video Resolution(s): 1080p, 1080i, 720p, 576i, 480p, and 480i
 Power Consumption: 50W (operating); 0.8W (standby)
 Display Color: 16.7K
 Projection Size: 30-130"
 Supported Signal/Input Ports: VGA/USB/HDMI/SD Card
 Dimensions: 7.5" x 6.5" x 2.6" (190 x 165 x 65mm)
 Weight: 2.12 lbs. (0.96 kg)

IMPORTANT SAFEGUARDS

1. Use the GOTheater only as intended and as described in this manual.
2. Do not look into the GOTheater's lens while projector is working.
3. Do not put any cloth (or other materials) over the ventilation holes of the GOTheater.
4. The GOTheater is not water-proof, so do not get it wet or place a vase, cup, bowl, etc. anywhere near it.
5. The GOTheater should be always be used (and stored) in a dry and clean place.
6. If the GOTheater is not in use for a long period, be sure that it is off and the power cord is unplugged.
7. Please use the factory original foam and other shockproof materials when transporting the GOTheater.
8. If the GOTheater is defective or broken, do not attempt to repair it yourself. Please contact tzumi customer support to arrange for proper repair protocols.
9. To avoid risk of electric shock, do not disassemble (or attempt to repair) the GOTheater in any way, shape, or form.

If you have any other questions or issues with product use and/or care, please contact tzumi Technical Support at: support@tzumi.com or call us at: 1855-GO-TZUMI.



GO Theater Cinema Projector. Distributed by tzumi Inc. NY, NY 10016. © 2020 tzumi Inc. All Rights Reserved. Made in China. Other trademarks and trade names are those of their respective owners. All pictures shown are for illustration purpose only. Actual product may vary due to product enhancement. Subject to change without prior notice.

